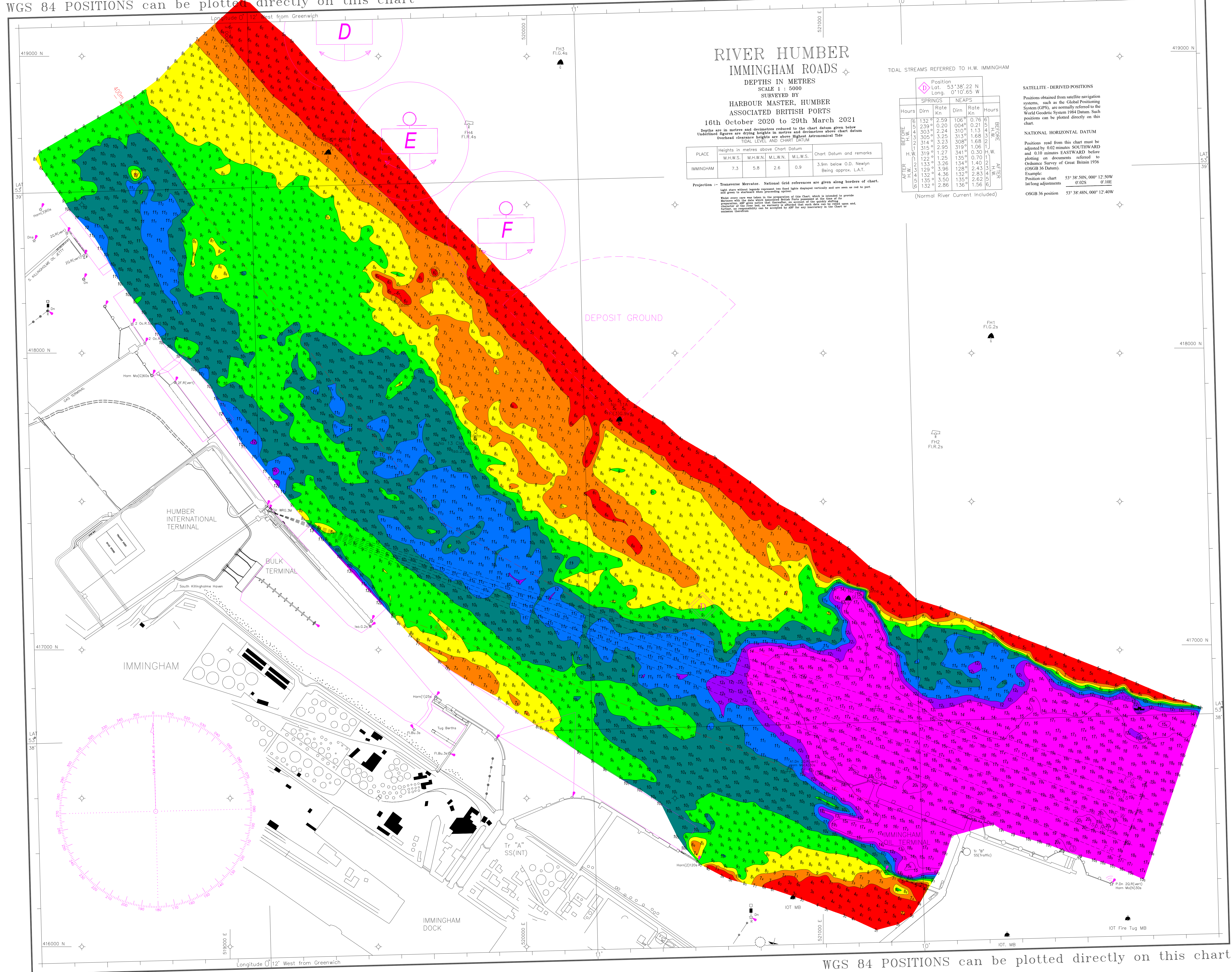


WGS 84 POSITIONS can be plotted directly on this chart

© Copyright 2021. All rights reserved. No part of this product may be reproduced in any form (including photocopying or by electronic means) without prior permission.



# RIVER HUMBER IMMINGHAM ROADS

DEPTHS IN METRES  
SCALE 1 : 5000  
SURVEYED BY  
HARBOUR MASTER, HUMBER  
ASSOCIATED BRITISH PORTS  
16th October 2020 to 29th March 2021

Depths are in metres and decimetres reduced to the chart datum given below  
Undated figures are drying heights in metres and decimetres above chart datum  
Overhead clearance heights are above highest astronomical tide

PLACE	Heights in metres above Chart Datum				Chart Datum and remarks
	M.H.W.S.	M.H.W.N.	M.L.W.N.	M.L.W.S.	
IMMINGHAM	7.3	5.8	2.6	0.9	3.9m below O.D. Newlyn Being approx. L.A.T.

Projection: Transverse Mercator. National Grid references are given along borders of chart.  
Light icons without spirals represent two flash lights displaced vertically and are seen as red to port and green to starboard when proceeding upstream.  
When every new star is taken in the preparation of this Chart, which is intended to provide the Mariners with the data which would be obtained from the survey of the quality of the water, the depth soundings are corrected for the effects of the tide, and the soundings are given in metres and decimetres above the chart datum. The soundings are given in metres and decimetres above the chart datum. The soundings are given in metres and decimetres above the chart datum. The soundings are given in metres and decimetres above the chart datum.

TIDAL STREAMS REFERRED TO H.W. IMMINGHAM

Position Dirn	SPRINGS		NEAPS		Hours
	Dirn	Rate	Dirn	Rate	
BEFORE H.W.	132°	2.59	106°	0.76	6
BEFORE M.L.W.	239°	0.20	004°	0.21	6
AFTER H.W.	305°	3.25	310°	1.13	6
AFTER M.L.W.	314°	2.23	308°	1.68	6
AFTER H.W.	319°	2.95	319°	1.06	6
AFTER M.L.W.	122°	1.27	341°	0.30	6
AFTER H.W.	133°	3.26	134°	1.40	6
AFTER M.L.W.	129°	3.96	128°	2.43	6
AFTER H.W.	143°	4.36	132°	2.83	6
AFTER M.L.W.	135°	3.50	135°	2.62	6
AFTER H.W.	132°	2.86	136°	1.56	6

(Normal River Current Included)

SATELLITE-DERIVED POSITIONS  
Positions obtained from satellite navigation systems, such as the Global Positioning System (GPS), are normally referred to the World Geodetic System 1984 Datum. Such positions can be plotted directly on this chart.

NATIONAL HORIZONTAL DATUM  
Positions read from this chart must be adjusted by 0.02 minutes SOUTHWARD and 0.10 minutes EASTWARD before plotting on documents referred to Ordnance Survey of Great Britain 1936 (OSGB 36 Datum).  
Example:  
Position on chart 53° 38' 50N, 000° 12' 50W  
lat/long adjustments 0.02S 0.10E  
OSGB 36 position 53° 38' 48N, 000° 12' 40W

WGS 84 POSITIONS can be plotted directly on this chart